

HOLLIS TAGGART GALLERIES

ART MIAMI 2023

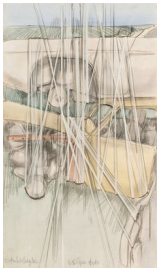
For full details and larger images, please see the end of this document.



Francis Hines (1920-2016)

Untitled, from the Hoboken Autobody Series (No. 719), 1983
Inscribed, dated, and signed lower right: "Hoboken Autobody Inc. XXXVI 9/83 F. Hines"
Hardpoint pastel on Arches paper mounted on wood with synthetic fabric wraps
60 x 48 in. (152.4 x 121.9 cm)
(HTG17426)

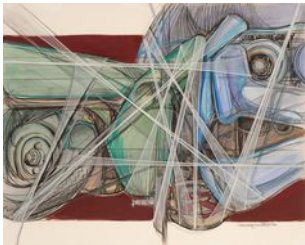
[View detail](#)



Francis Hines (1920-2016)

Untitled, from the Hoboken Autobody Series (No. IV), 1983
Titled, numbered, signed, and dated lower edge: "Hoboken Autobody, Inc. / No. IV F. Hines 3/31/83"
Hardpoint pastel on Arches paper mounted on wood with synthetic fabric wraps
41 3/4 x 24 in. (106 x 61 cm)
(HTG18887)

[View detail](#)



Francis Hines (1920-2016)

Untitled, from the Hoboken Autobody Series (No. XXXIV), 1983
Signed, titled, and dated lower right: "Hoboken Autobody Inc No. XXXIV 8/83 F. Hines"
Hardpoint pastel on Arches paper mounted on wood with synthetic fabric wraps
48 1/2 x 60 in. (123.2 x 152.4 cm)
(HTG18938)

[View detail](#)



Francis Hines (1920-2016)

Untitled, from the Hoboken Autobody Series (No. XII), 1983
Titled, dated, and signed lower right: "Hoboken Autobody, Inc. / No. XII / 5/4/83 / F. Hines"
Hardpoint pastel on Arches paper mounted on wood with synthetic fabric wraps

[View detail](#)

24 x 48 in. (61 x 121.9 cm)
(HTG19119)



Francis Hines (1920-2016)

[View detail](#)

Untitled, from the Hoboken Autobody Series (No. XLII), 1983
Titled, dated, and signed lower right: "Hoboken Autobody, Inc. / No. XLII / 10/83 / F. Hines"
Hardpoint pastel on Arches paper mounted on wood with synthetic fabric wraps

60 x 48 in. (152.4 x 121.9 cm)
(HTG19120)



Francis Hines (1920-2016)

[View detail](#)

Untitled, from the Hoboken Autobody Series (No. XLVII), 1983
Titled, dated, and signed lower left: "Hoboken Autobody, Inc. / No. XLVII / 10/83 / F. Hines"
Hardpoint pastel on Arches paper mounted on wood with synthetic fabric wraps

60 x 48 in. (152.4 x 121.9 cm)
(HTG19121)



Francis Hines (1920-2016)

[View detail](#)

Untitled, from the Hoboken Autobody Series (No. XIV), 1983
Titled, dated, and signed lower right: "Hoboken Autobody, Inc. / No. XIV / 5/17/83 / F. Hines"

Hardpoint pastel on Arches paper mounted on wood with synthetic fabric wraps
22 x 48 in. (55.9 x 121.9 cm)
(HTG19185)



Francis Hines (1920-2016)

[View detail](#)

Untitled, from the Hoboken Autobody Series (No. 974), 1984
Signed and dated lower right: "F. Hines 10/29/84"
Numbered and dated verso: "#72 / 10/29/84"

Hardpoint pastel on Arches paper mounted on wood with synthetic fabric wraps
68 x 48 in. (172.7 x 121.9 cm)
(HTG17741)



Francis Hines (1920-2016)

[View detail](#)

Untitled from the Mutagenesis Series (No. 545), 1987
Signed and dated lower right: "F. Hines 7/87"
Hardpoint pastel on Arches paper mounted on wood with synthetic fabric wraps

68 x 48 in. (172.7 x 121.9 cm)
(HTG17750)



Francis Hines (1920-2016) [View detail](#)
Urban Icon XIV (No. 139), 1987
Signed and dated lower left: "F. Hines 1/87"
Numbered, Titled, signed, and dated verso: "# 139 / URBAN
ICON XIV / Francis Hines 1/87"
Hardpoint pastel on Arches paper mounted on wood with
synthetic fabric wraps
68 x 48 in. (172.7 x 121.9 cm)
(HTG18939)



Francis Hines (1920-2016) [View detail](#)
Study for "Urban Icon XIV (No. 139)", circa 1987
Pastel on paper
30 1/4 x 22 1/2 in. (76.8 x 57.1 cm)
(HTG18944)



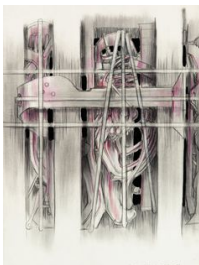
Francis Hines (1920-2016) [View detail](#)
Cyborg Woman, from the Urban Icons Series, circa 1987
Pastel on paper
30 1/4 x 22 1/2 in. (76.8 x 57.1 cm)
(HTG18942)



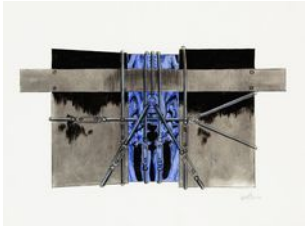
Francis Hines (1920-2016) [View detail](#)
20th Century Totems, 1992
Titled, dated, and signed lower right: "20th Century Totems
11/92 GF. Hines"
Acrylic, pastel, graphite on paper
30 x 22 1/2 in. (76.2 x 57.1 cm)
(HTG18946)



Francis Hines (1920-2016) [View detail](#)
Untitled, 1996
Dated and signed lower right: "3/96 F. Hines"
Acrylic, pastel, graphite on paper
30 x 22 1/4 in. (76.2 x 56.5 cm)
(HTG18943)



Francis Hines (1920-2016) [View detail](#)
Excavations (No. 5), 2002
Dated, titled, and signed lower right: "2/02 Excavations No. 5
SMA F. Hines"
Graphite and pastel on paper
30 x 22 1/4 in. (76.2 x 56.5 cm)
(HTG18947)



Francis Hines (1920-2016)

Untitled, 2006

Dated and signed lower right: "4/06 F. Hines"

Acrylic, pastel, and graphite on paper

22 1/2 x 30 1/4 in. (57.1 x 76.8 cm)

(HTG18949)

[View detail](#)



Francis Hines (1920-2016)

Cages, 2007

Titled, dated, and signed lower right: "'Cages' 9/07 F Hines"

Acrylic and oil pastel on paper

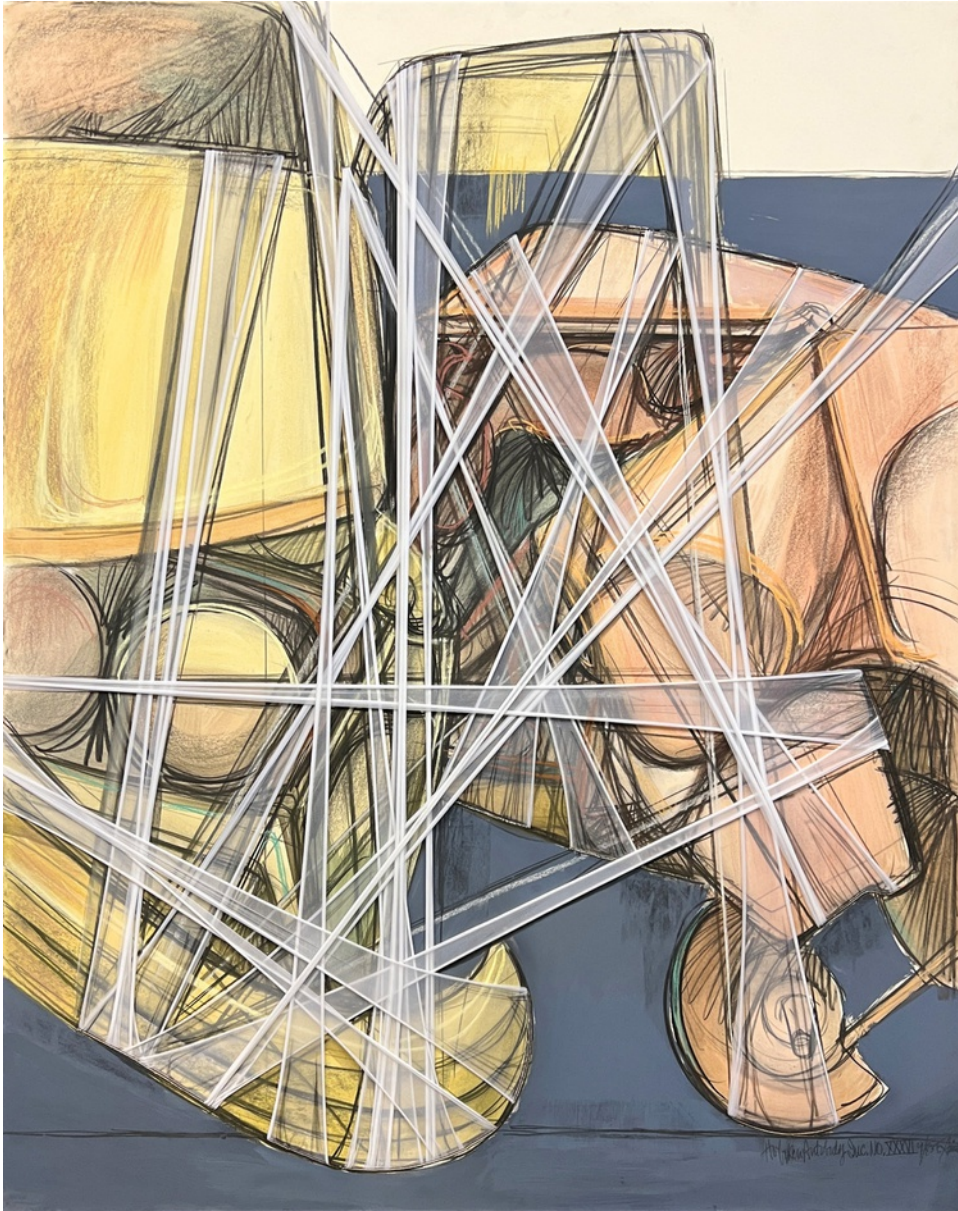
29 3/4 x 22 in (75.6 x 55.9 cm)

(HTG17627)

[View detail](#)

FRANCIS HINES

Untitled, from the Hoboken Autobody Series (No.719), 1983



Inscribed, dated, and signed lower right: "Hoboken Autobody Inc. XXXVI 9/83 F. Hines"

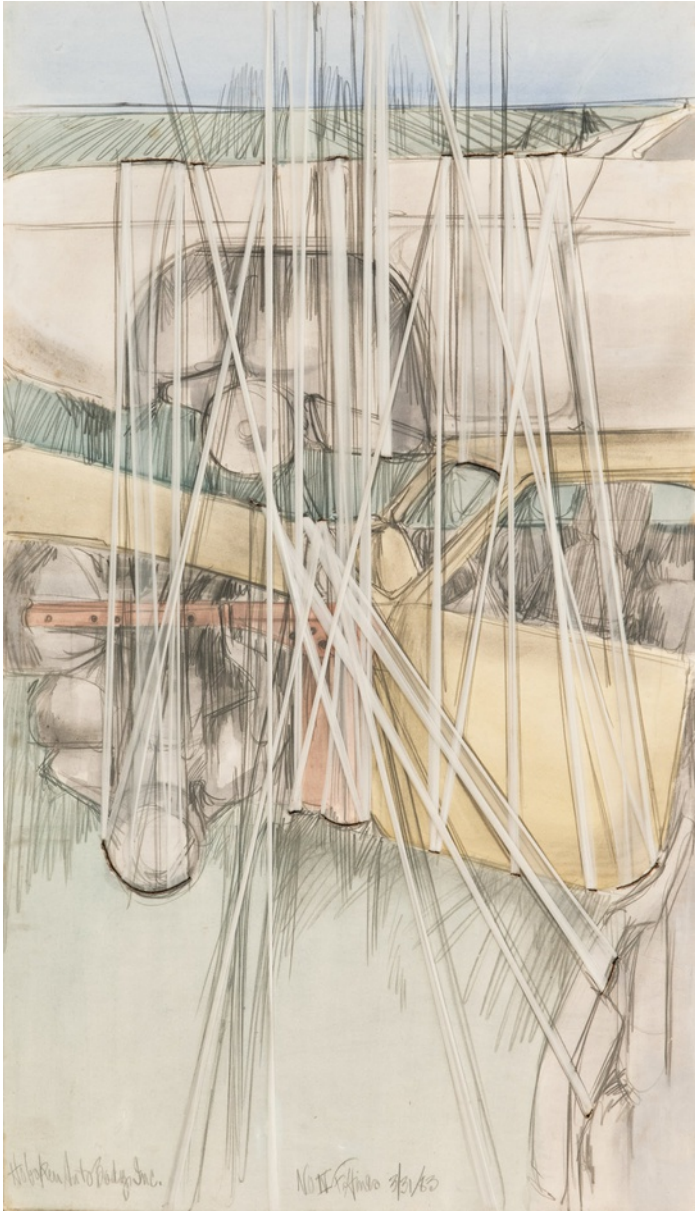
Hardpoint pastel on Arches paper mounted on wood with synthetic fabric wraps

60 x 48 in. (152.4 x 121.9 cm)

(HTG17426)

FRANCIS HINES

Untitled, from the Hoboken Autobody Series (No. IV), 1983



Titled, numbered, signed, and dated lower edge: "Hoboken Autobody, Inc. / No. IV F. Hines 3/31/83"

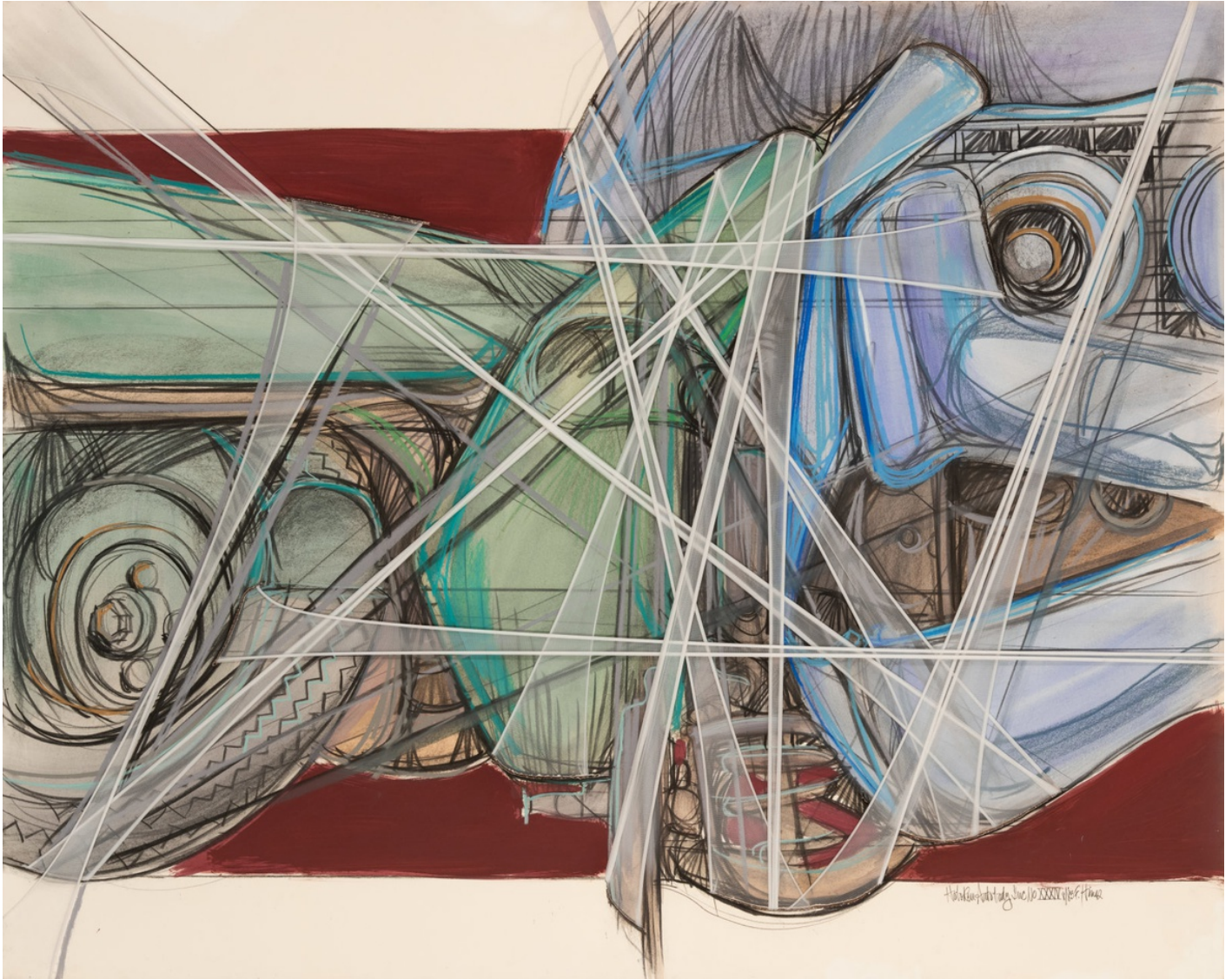
Hardpoint pastel on Arches paper mounted on wood with synthetic fabric wraps

41 3/4 x 24 in. (106 x 61 cm)

(HTG18887)

FRANCIS HINES

Untitled, from the Hoboken Autobody Series (No. XXXIV), 1983



Signed, titled, and dated lower right: "Hoboken Autobody Inc No. XXXIV 8/'83 F. Hines"

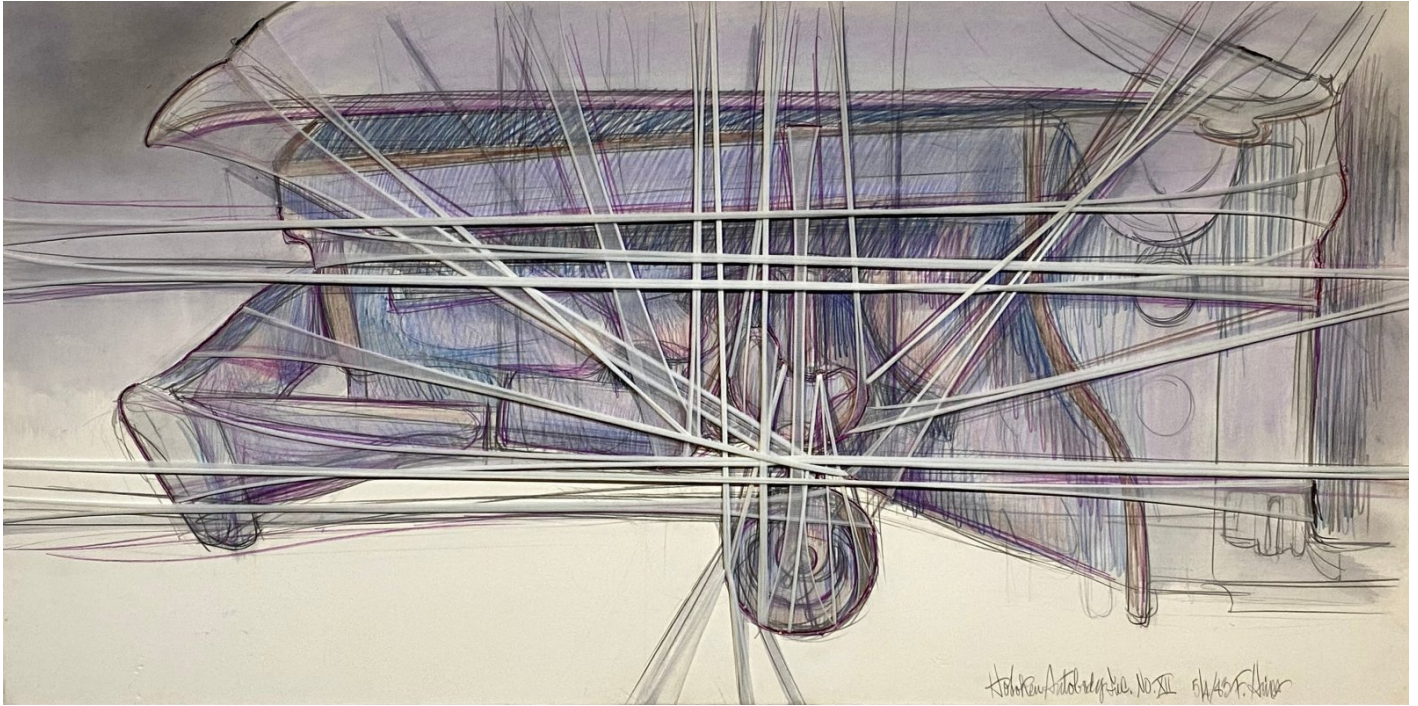
Hardpoint pastel on Arches paper mounted on wood with synthetic fabric wraps

48 1/2 x 60 in. (123.2 x 152.4 cm)

(HTG18938)

FRANCIS HINES

Untitled, from the Hoboken Autobody Series (No. XII), 1983



Titled, dated, and signed lower right: "Hoboken Autobody, Inc. / No. XII / 5/4/83 / F. Hines"

Hardpoint pastel on Arches paper mounted on wood with synthetic fabric wraps

24 x 48 in. (61 x 121.9 cm)

(HTG19119)

FRANCIS HINES

Untitled, from the Hoboken Autobody Series (No. XLII), 1983



Titled, dated, and signed lower right: "Hoboken Autobody, Inc. / No. XLII / 10/83 / F. Hines"
Hardpoint pastel on Arches paper mounted on wood with synthetic fabric wraps

60 x 48 in. (152.4 x 121.9 cm)
(HTG19120)

FRANCIS HINES

Untitled, from the Hoboken Autobody Series (No. XLVII), 1983

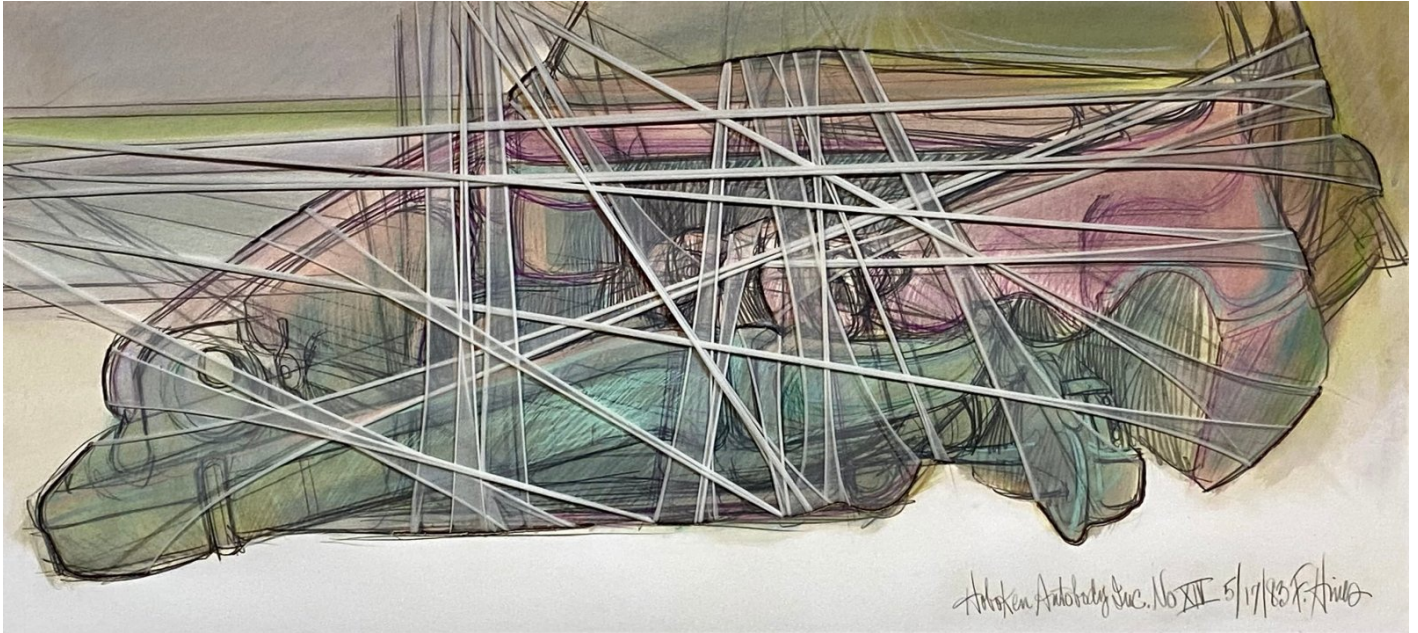


Titled, dated, and signed lower left: "Hoboken Autobody, Inc. / No. XLVII / 10/83 / F. Hines"
Hardpoint pastel on Arches paper mounted on wood with synthetic fabric wraps

60 x 48 in. (152.4 x 121.9 cm)
(HTG19121)

FRANCIS HINES

Untitled, from the Hoboken Autobody Series (No. XIV), 1983



Titled, dated, and signed lower right: "Hoboken Autobody, Inc. / No. XIV / 5/17/83 / F. Hines"

Hardpoint pastel on Arches paper mounted on wood with synthetic fabric wraps

22 x 48 in. (55.9 x 121.9 cm)

(HTG19185)

FRANCIS HINES

Untitled, from the Hoboken Autobody Series (No.974), 1984



Signed and dated lower right: "F. Hines 10/29/84"

Numbered and dated verso: "#72 / 10/29/84"

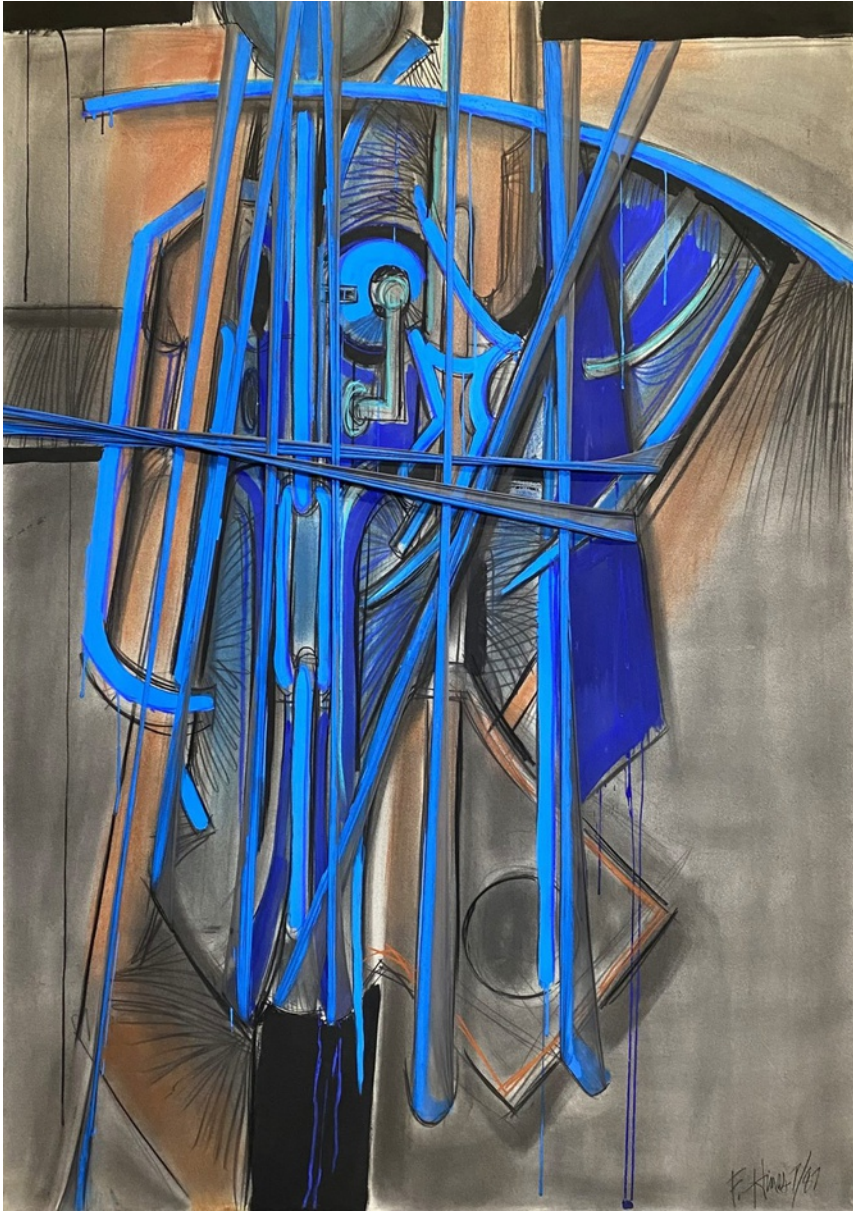
Hardpoint pastel on Arches paper mounted on wood with synthetic fabric wraps

68 x 48 in. (172.7 x 121.9 cm)

(HTG17741)

FRANCIS HINES

Untitled from the Mutagenesis Series (No.545), 1987



Signed and dated lower right: "F. Hines 7/87"

Hardpoint pastel on Arches paper mounted on wood with synthetic fabric wraps

68 x 48 in. (172.7 x 121.9 cm)

(HTG17750)

FRANCIS HINES
Urban Icon XIV (No. 139), 1987



Signed and dated lower left: "F. Hines 1/87"

Numbered, Titled, signed, and dated verso: "# 139 / URBAN ICON XIV / Francis Hines 1/87"

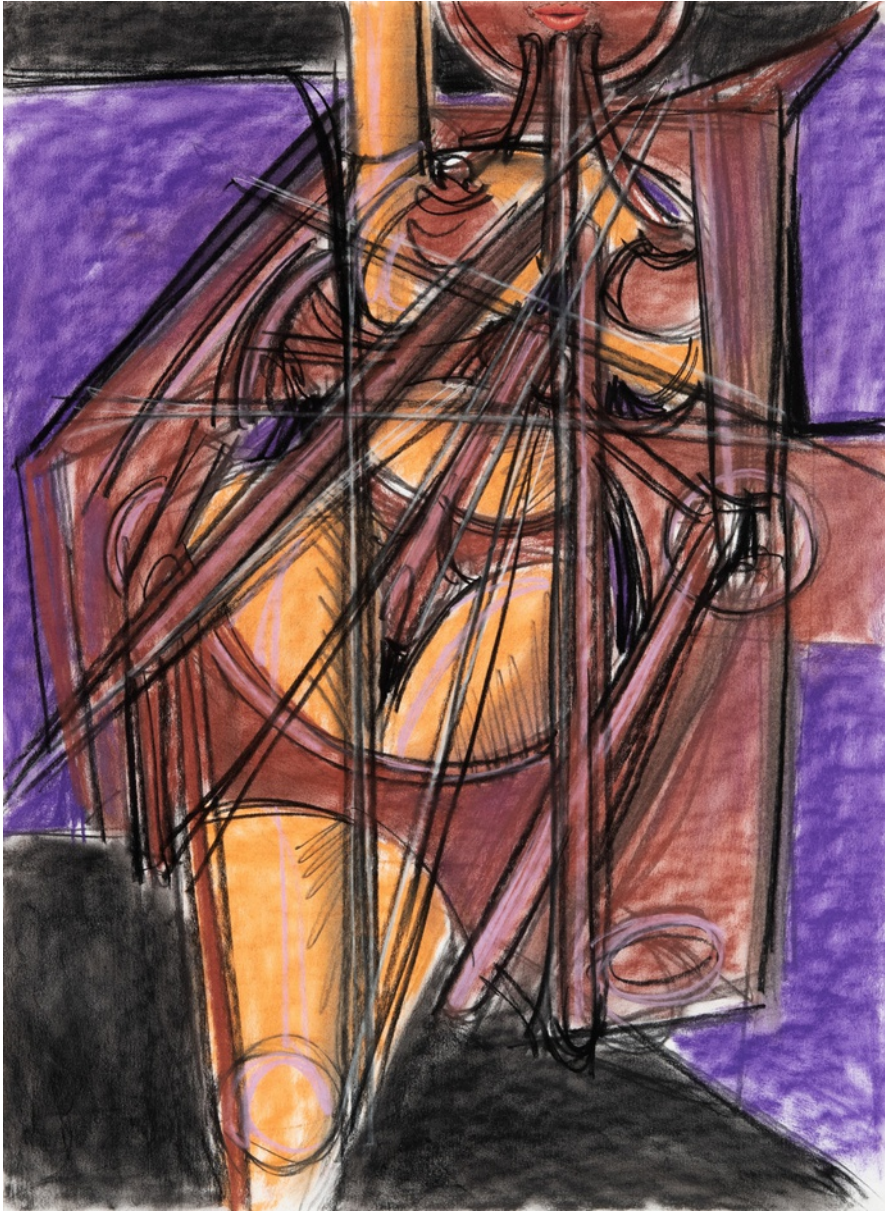
Hardpoint pastel on Arches paper mounted on wood with synthetic fabric wraps

68 x 48 in. (172.7 x 121.9 cm)

(HTG18939)

FRANCIS HINES

Study for "Urban Icon XIV (No. 139)", circa 1987



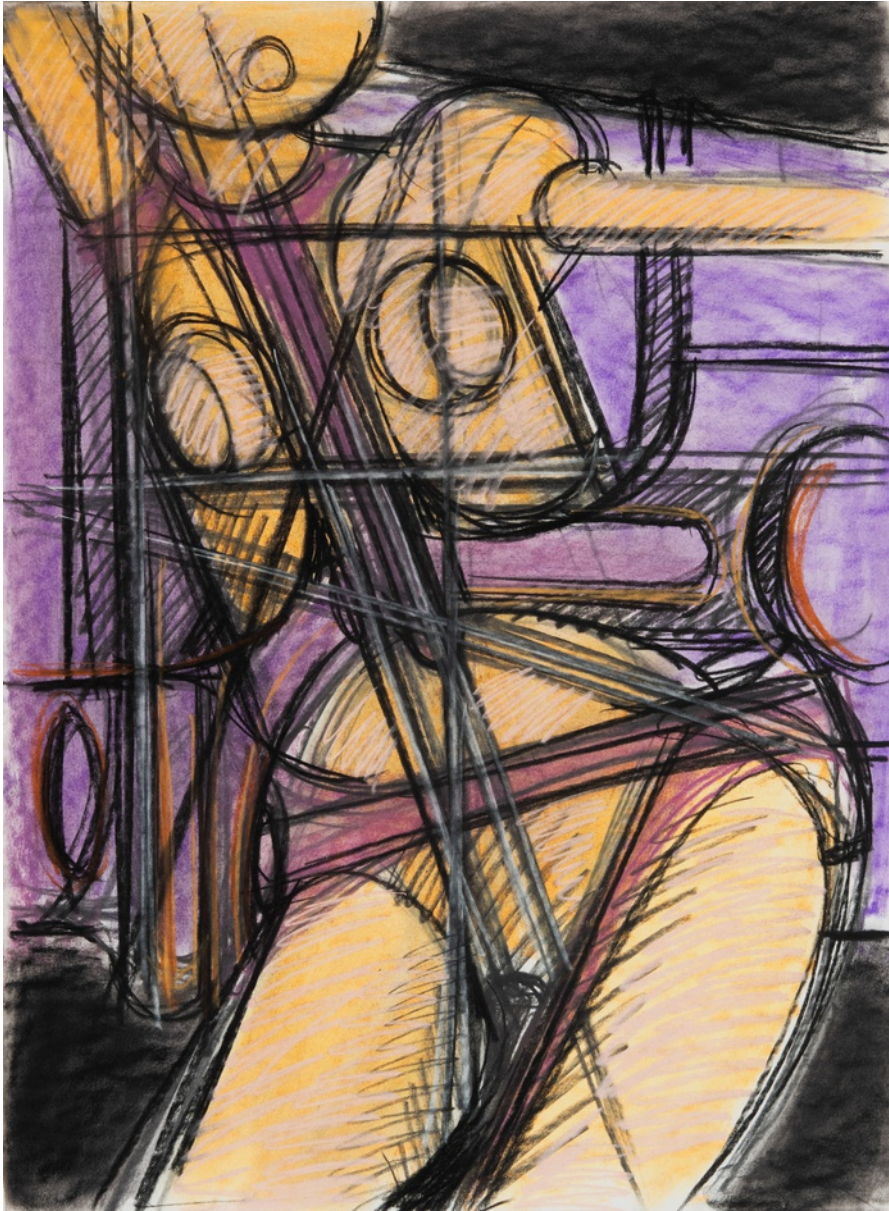
Pastel on paper

30 1/4 x 22 1/2 in. (76.8 x 57.1 cm)

(HTG18944)

FRANCIS HINES

Cyborg Woman, from the Urban Icons Series, circa 1987

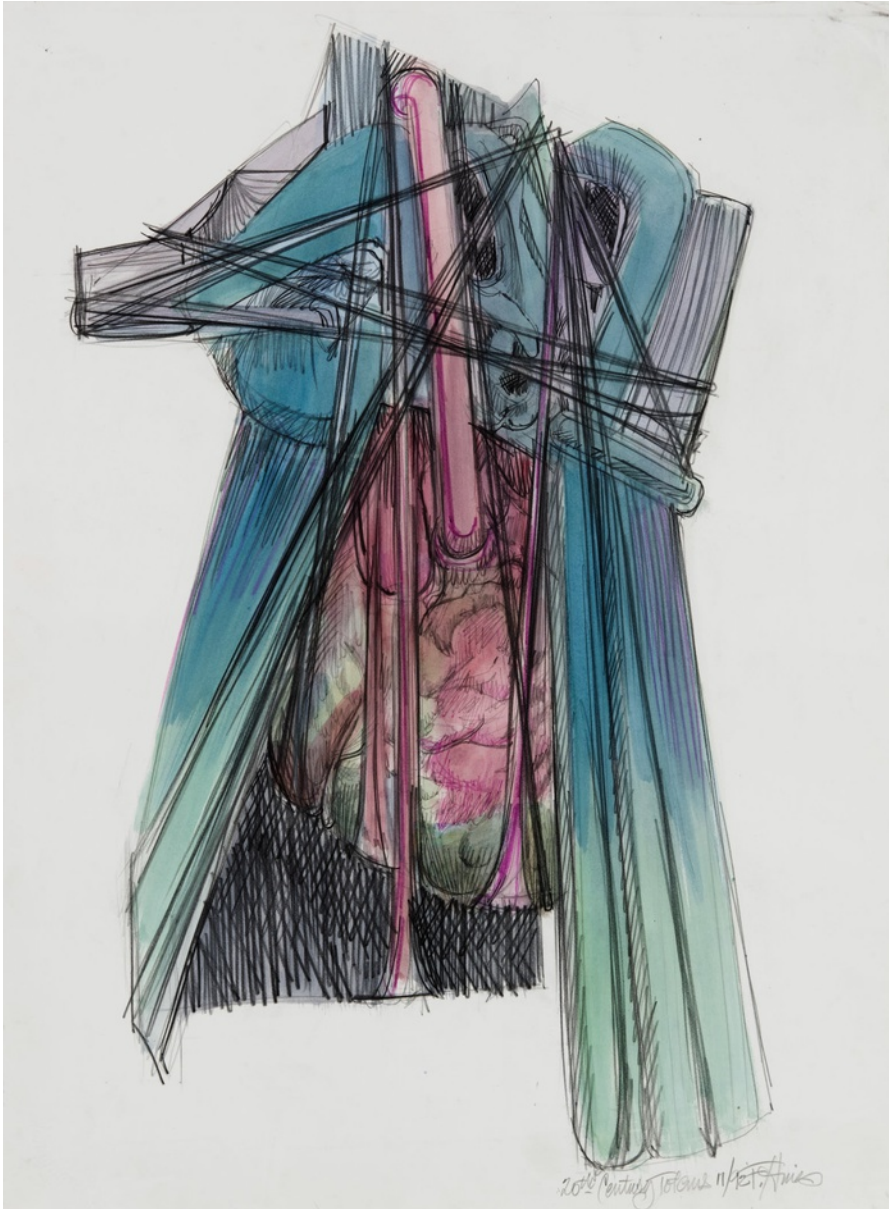


Pastel on paper

30 1/4 x 22 1/2 in. (76.8 x 57.1 cm)

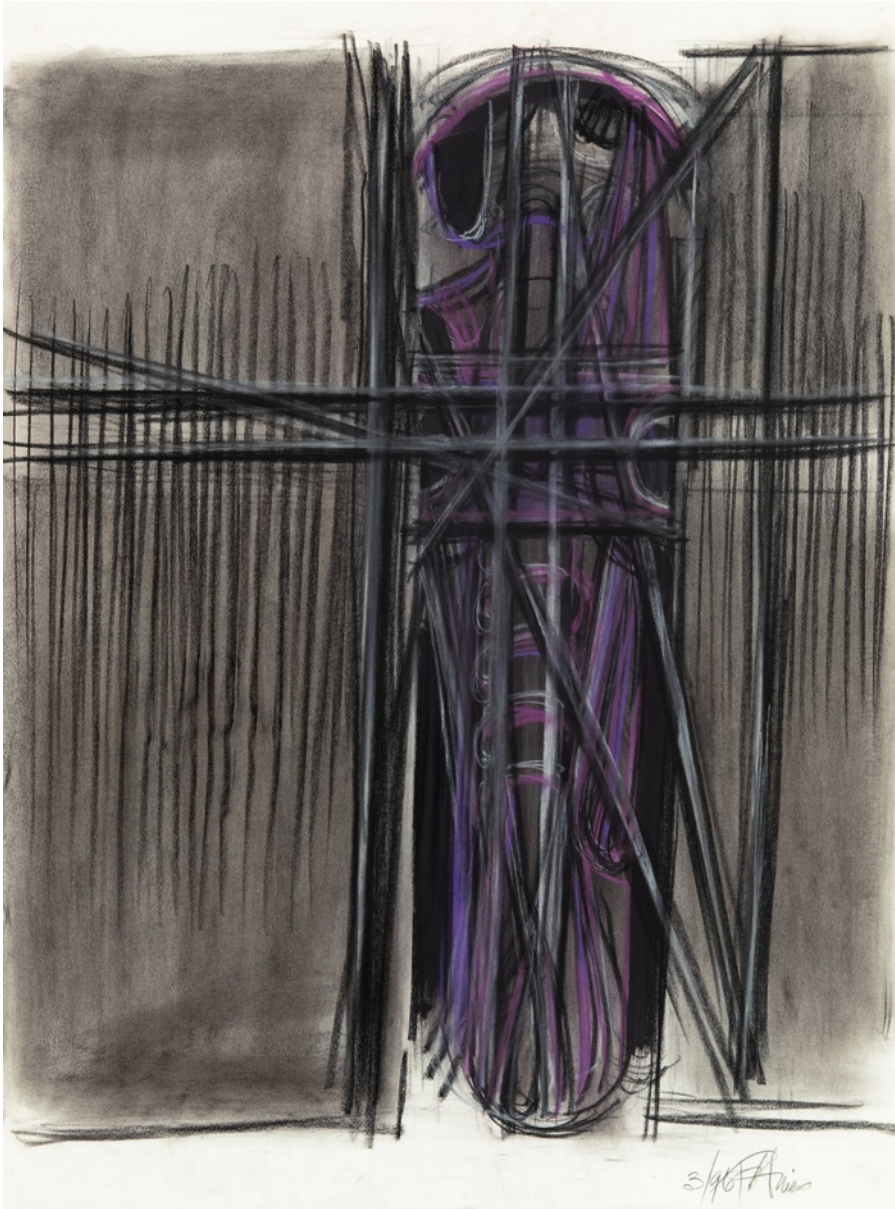
(HTG18942)

FRANCIS HINES
20th Century Totems, 1992



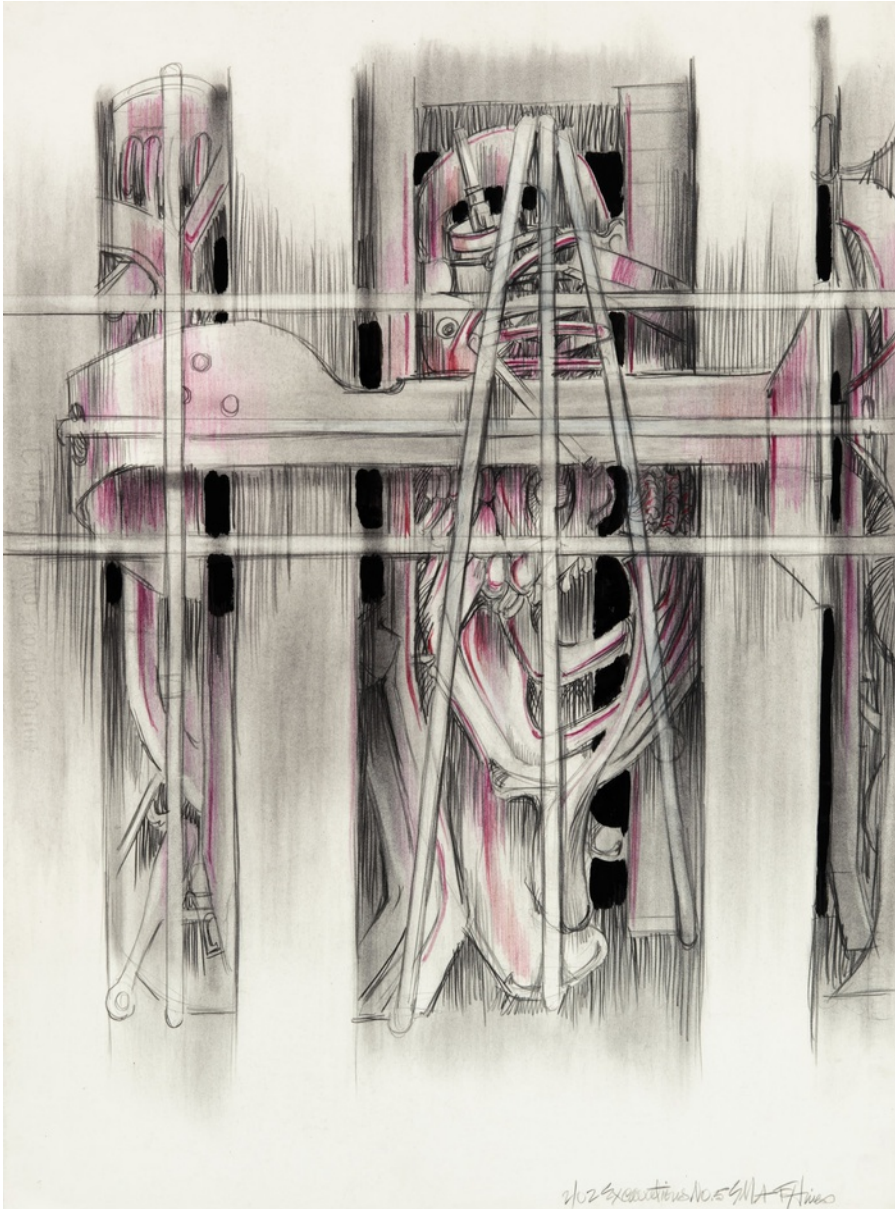
Titled, dated, and signed lower right: "20th Century Totems 11/92 GF. Hines"
Acrylic, pastel, graphite on paper
30 x 22 1/2 in. (76.2 x 57.1 cm)
(HTG18946)

FRANCIS HINES
Untitled, 1996



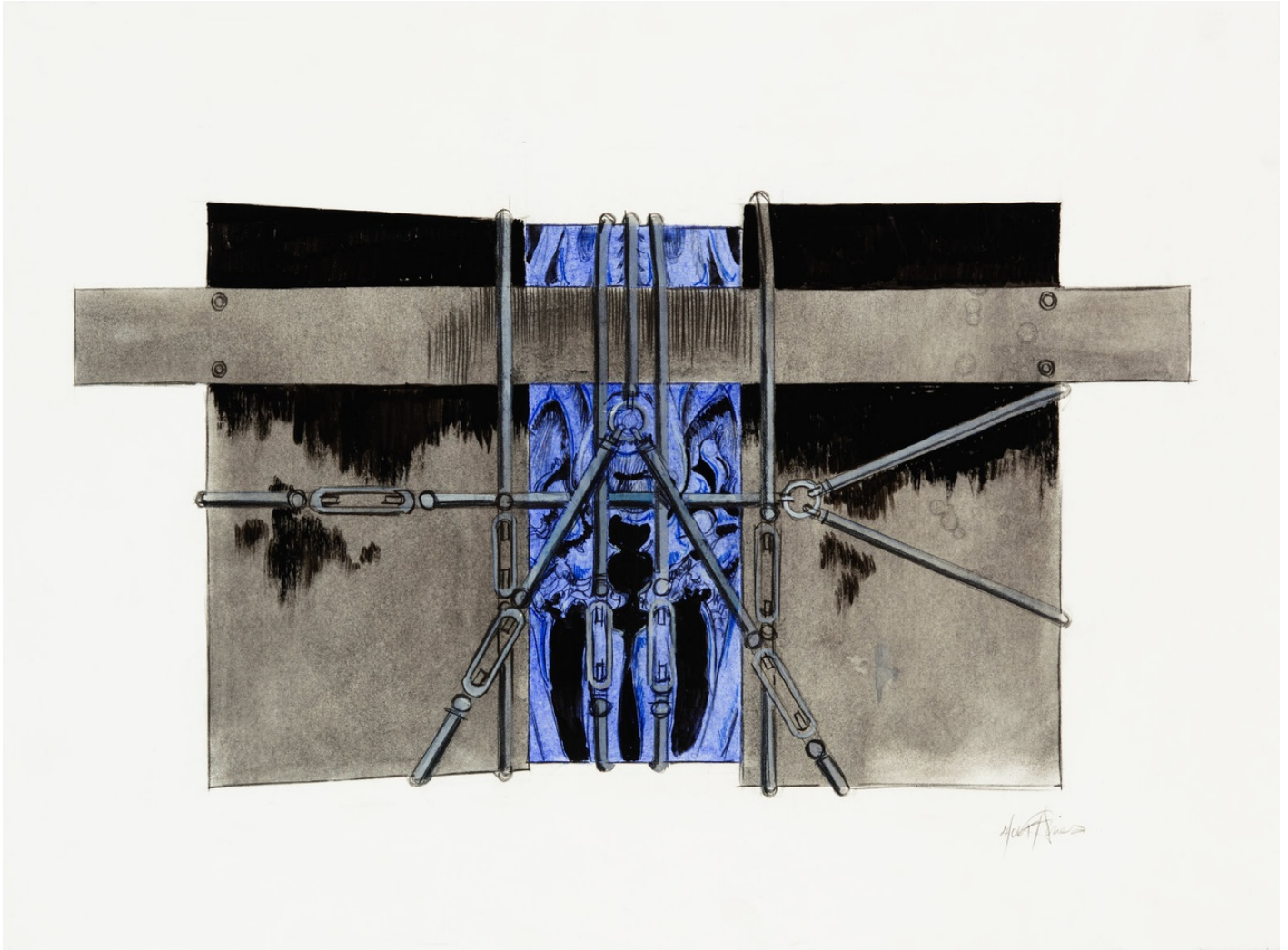
Dated and signed lower right: "3/96 F. Hines"
Acrylic, pastel, graphite on paper
30 x 22 1/4 in. (76.2 x 56.5 cm)
(HTG18943)

FRANCIS HINES
Excavations (No. 5), 2002



Dated, titled, and signed lower right: "2/02 Excavations No. 5 SMA F. Hines"
Graphite and pastel on paper
30 x 22 1/4 in. (76.2 x 56.5 cm)
(HTG18947)

FRANCIS HINES
Untitled, 2006



Dated and signed lower right: "4/06 F. Hines"
Acrylic, pastel, and graphite on paper
22 1/2 x 30 1/4 in. (57.1 x 76.8 cm)
(HTG18949)

FRANCIS HINES
Cages, 2007



Titled, dated, and signed lower right: "*Cages*' 9/07 F Hines"
Acrylic and oil pastel on paper
29 3/4 x 22 in (75.6 x 55.9 cm)
(HTG17627)

Hollis Taggart's Art Miami Francis Hines booth will feature a selection of works by the only artist to ever wrap buildings in Manhattan, Francis Mattson Hines (1920-2016), known for his paintings, sculptures, and public art projects. His work positioned him at the forefront of expressionist experimenting with wrapping, which allowed him to imbue his works with literal and metaphoric tension and kineticism. Though his work received critical acclaim during his lifetime, Hines slipped into obscurity toward the end of his life. Fortunately, most of his work was salvaged outside of his barn studio a year after his death.

For more information on the gallery's booth presentation please contact us at +1 212.628.4000 or info@hollistaggart.com.